

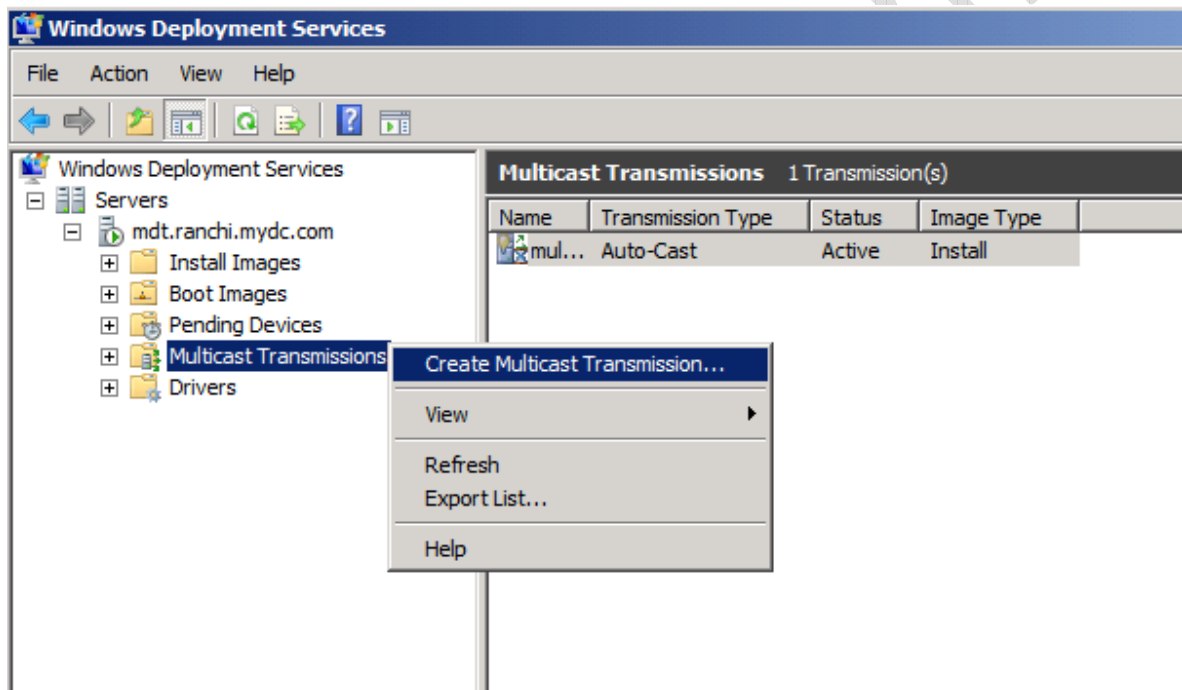


---

# HOW TO COMPLETE MULTICASTING WHICH IS INSTALLATION OF MULTIPLE COMPUTERS SIMULTANEOUSLY USING WDS

---

In the Windows Deployment Services mmc (Microsoft Management Console), right click on Multicast Transmissions in the left pane and choose Create Multicast Transmission.



When the wizard appears, give the transmission a name and click on "Next >"



**Create Multicast Transmission Wizard**

**Transmission Name**

This wizard creates a multicast transmission for an image. Once created, Windows Deployment Services will transmit the image to multiple clients using a single transmission, instead of one transmission for each client. This can significantly reduce the amount of network bandwidth that is used.

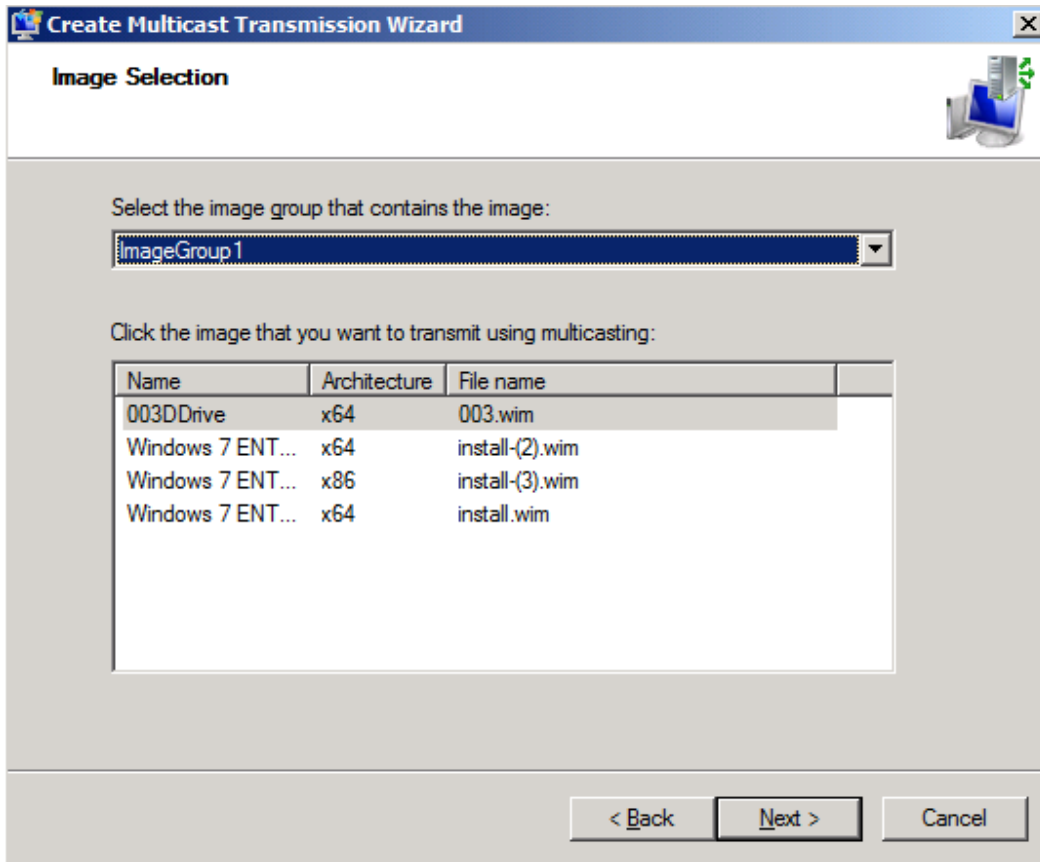
Type a name for this transmission:

[More information about multicast transmissions](#)

< Back   Next >   Cancel

Next you will get the option to select the image group and image from your predefined image groups.

Select the image group and image and finally click "Next>".



Select Multicast Type and click "Next>".



**Create Multicast Transmission Wizard**

**Multicast Type**

Select one of the following types to define when to start this transmission.

Auto-Cast. Starts the transmission automatically when a client requests the image. Then, as other clients request the same image, they also will be joined to the transmission that is already started.

Scheduled-Cast. Starts the transmission based on the following criteria.

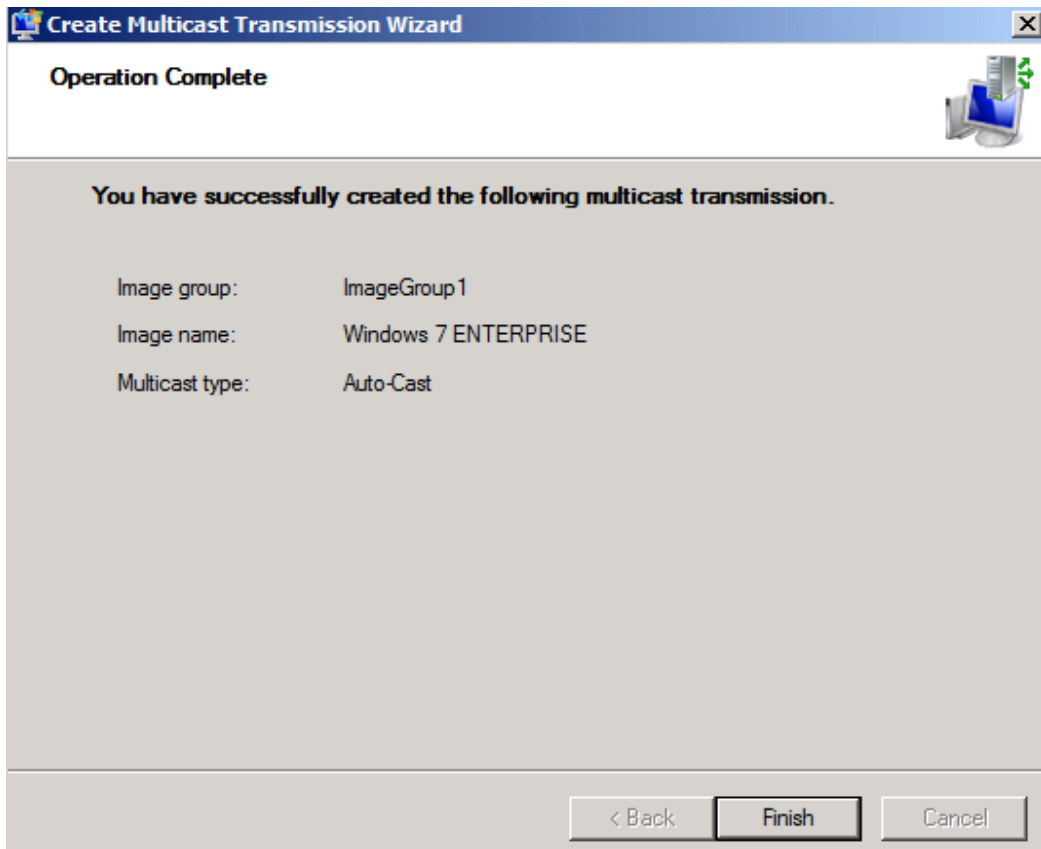
Note: If neither of the boxes below are selected, then the transmission will not start until you manually start it.

Start when the number of clients that have requested the image is:  
Threshold:

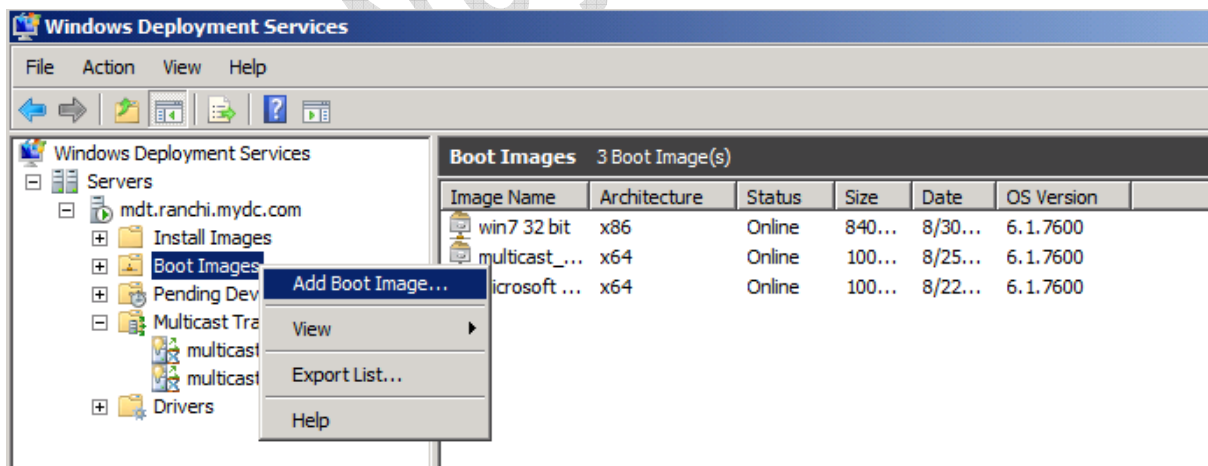
Start at a later time  
Start date:  Time:

< Back   Next >   Cancel

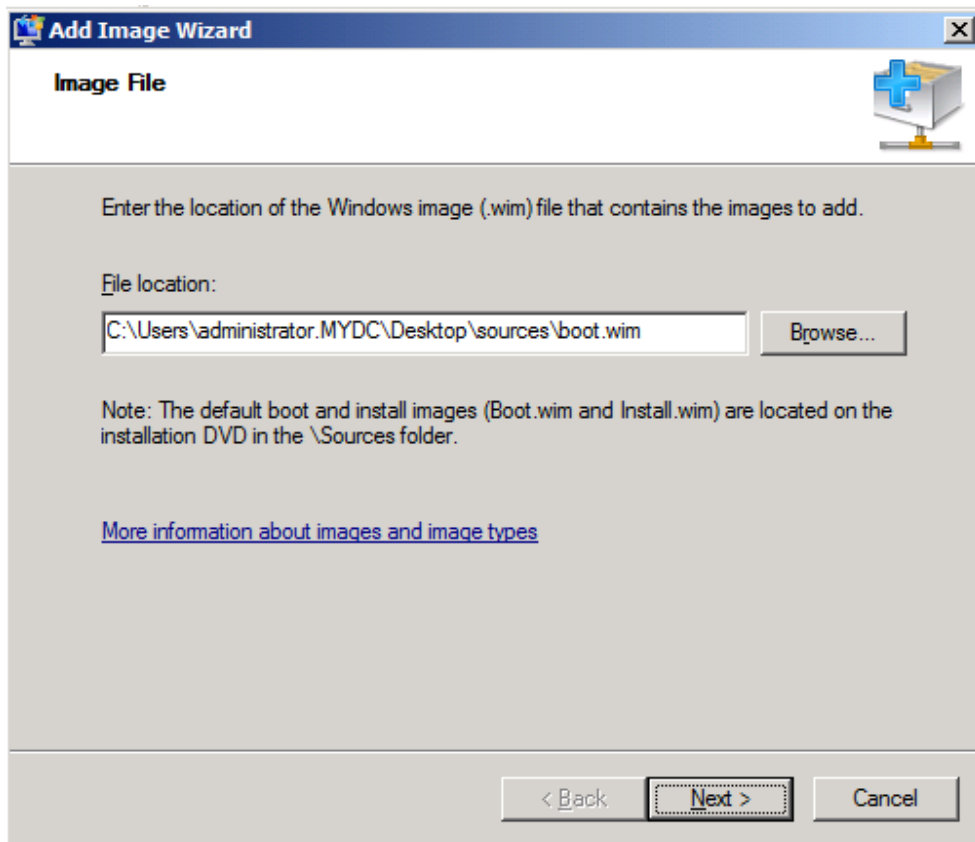
Once done, Click "Finish"



In the WDS mmc, right click on Boot Images and choose Add boot image.



Then "Add Image Wizard" appears. Enter the path of boot.wim image file and click on "Next >".



Enter the name and description of the image. And click on "Next >".



**Add Image Wizard**

**Image Metadata**

Enter a name and description for the following image:  
'Microsoft Windows Setup (x64)'

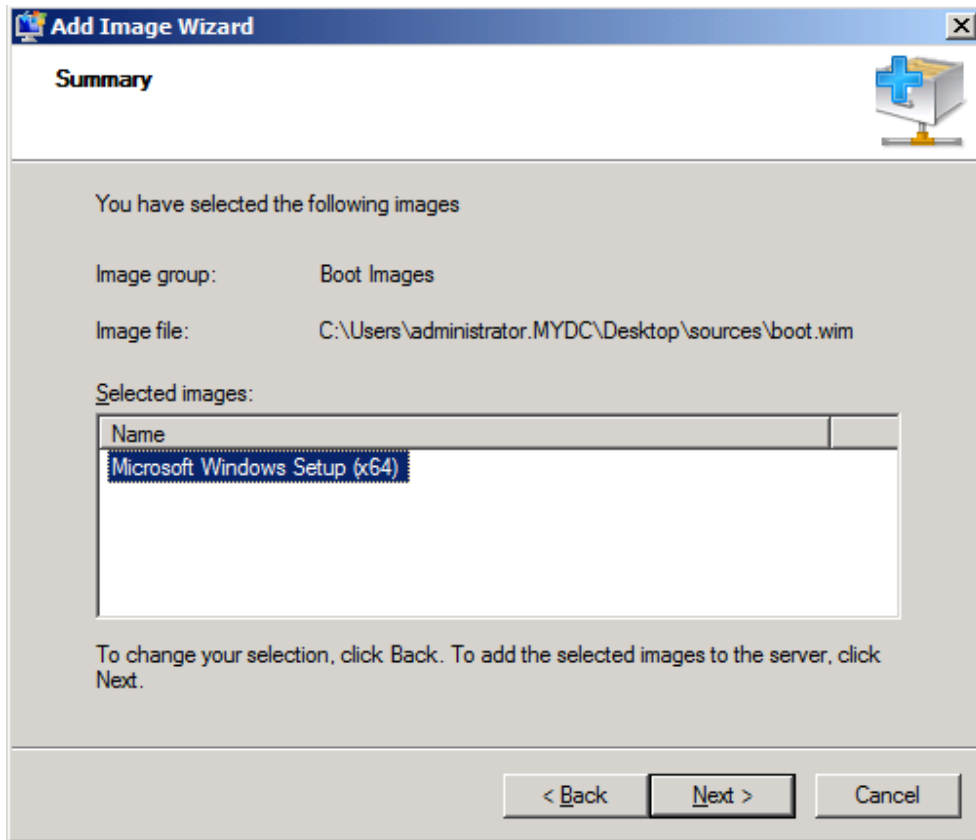
Image name:

Image description:

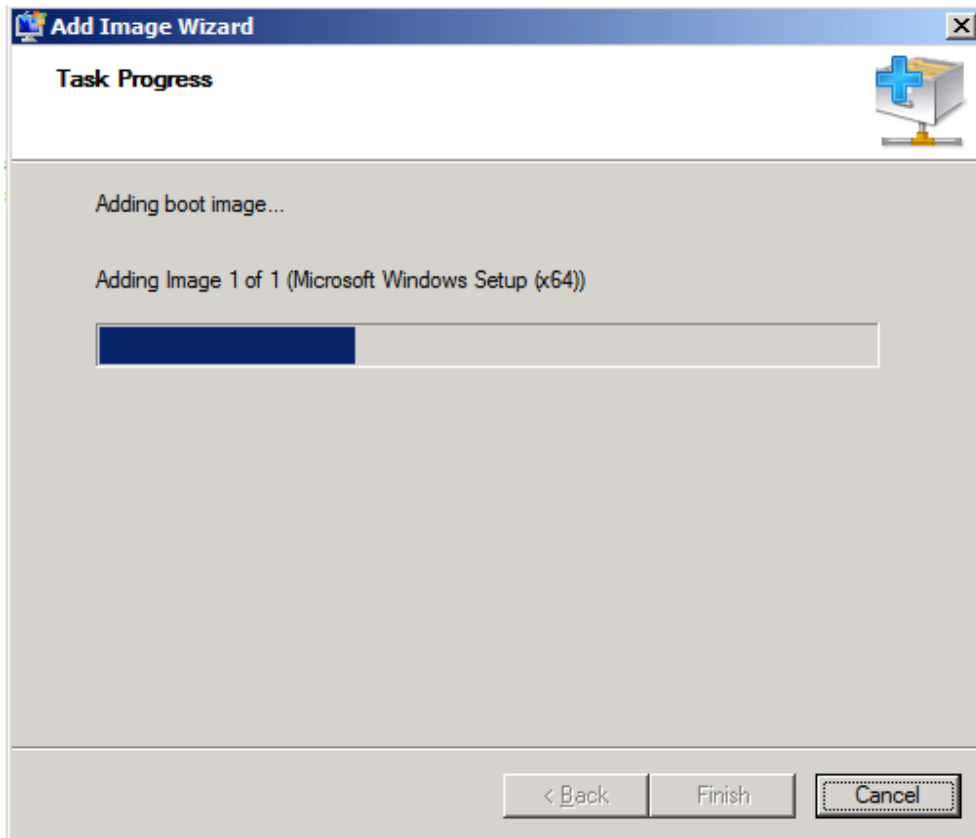
Image architecture:  
x64

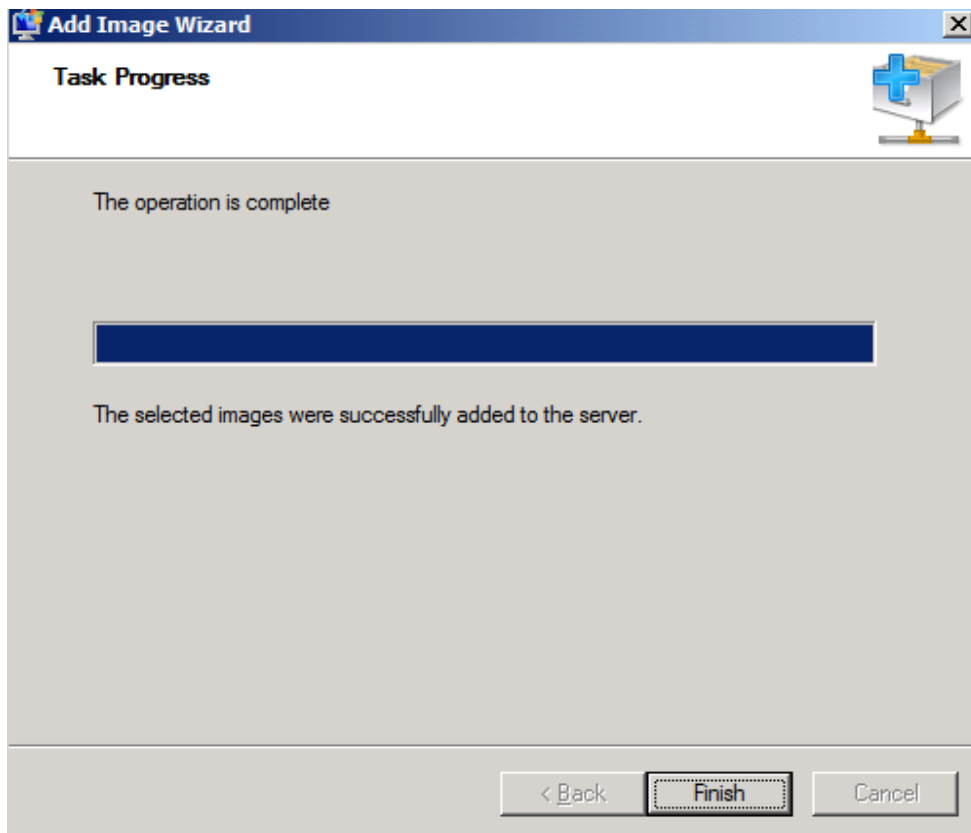
< Back   Next >   Cancel

Doing so will lead to Summary window as below, click on "Next >".



Boot image is being added to the Boot images folder. Here is the "Task Progress" window.





Click on "Finish"

Now create multiple virtual machines and make sure that these VMs will boot from network (PXE -boot). After that start each VM and once VM gets ip address from DHCP press 'f12' to boot from network. Thereafter installation of operating system starts. Do the same for rest of the virtual machines.